

# MLINE

One concept | Endless solutions

**MODULAR AND MULTIFUNCTIONAL  
SIGNALING DEVICES  
ENGINEERED FOR CIVIL AND  
INDUSTRIAL APPLICATIONS**



**SIRENA** S.p.A.

**MORE THAN  
BRIGHT IDEAS**



# MLINE

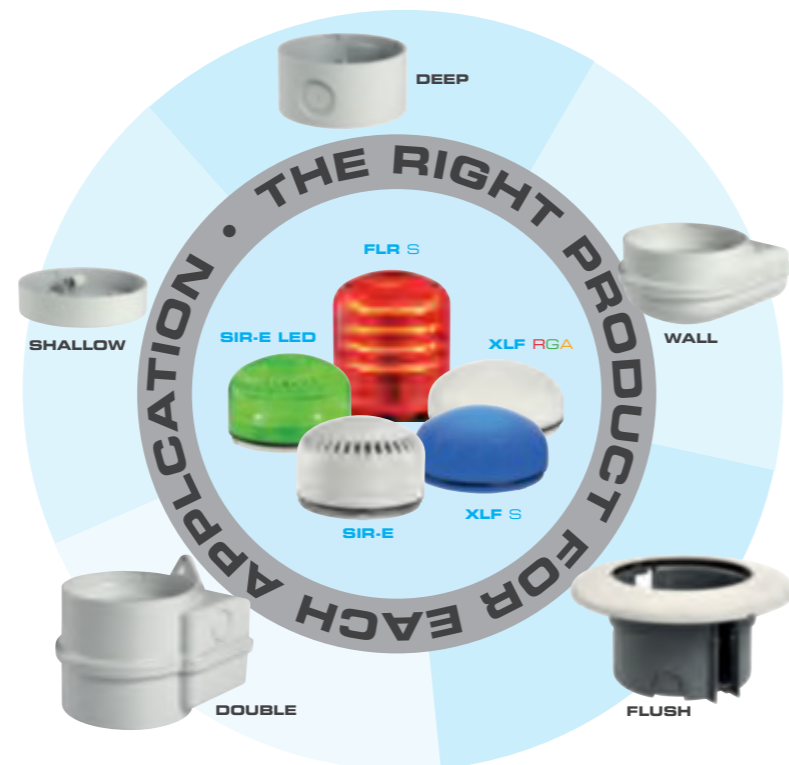
**MLINE** is a new and unique modular concept developed by Sirena which takes signaling devices to a whole new level delivering users with a customized product tailored for each specific application.

The high optical performances of the beacons, together with the strong sound output of the sounders makes **MLINE** a high-end range destined to the most demanding applications.

After a series of rigorous tests, **MLINE** has been granted IP 65 status, a very high rating, especially for sounders, making this product ideal also for outdoor applications.

**MLINE** has been engineered with a unique modular concept which allows each of the five **domes** to be mounted on any of the five **bases**, drastically reducing the number of parts stocked and allowing Professionals to have a more reactive response to the market needs.

Furthermore, the innovative design allows **MLINE** to become a key player also in Commercial and Civil applications besides more traditional Industrial applications.



# MULTILEVEL TECHNOLOGY

## DOMES

Sirena has developed five multifunctional domes based on a unique multilevel technology allowing each function of the device to be controlled independently, creating different levels of alarm with one single device.

All **MLINE** acoustic domes adopt Sirena's brand new "realTime" technology that allows modifying sounds via dip-switches without the need to power off the device allowing power-on operations on machinery.

Each **MLINE** component has also been engineered with an easy snap-on technology that allows easy and safe installation procedures also in the most challenging environments.

## BASES

SIRENA has developed five unique base shapes with three ranges of voltages (low, mid and high tension) and four color lines, offering a total of 46 different options: a perfect fit for each application.

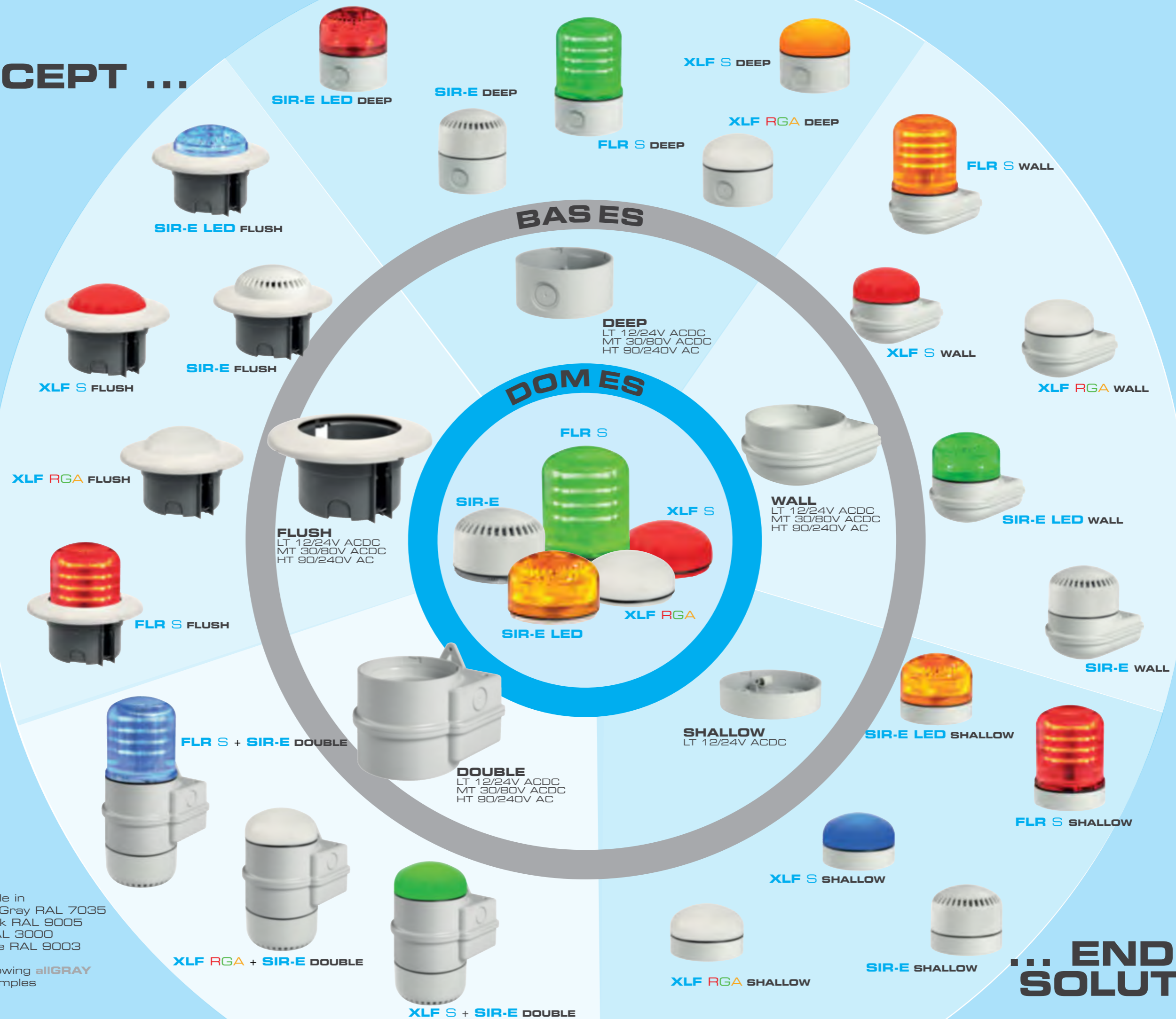
- The **SHALLOW** base (available in **12/24V ACDC**) is the ideal choice for all flat mounting applications where cabling occurs from the bottom of the signaling device and where a more compact design is required
- The **DEEP** base (available in **12/24V ACDC**, **30/80V ACDC** and **90/240V AC**) offers the possibility to install up to two cable glands (IN and OUT) on the sides of the base. This is the ideal choice when cabling from the bottom of the device is not possible or when an "in-series" installation is required
- The **WALL** base (available in **12/24V ACDC**, **30/80V ACDC** and **90/240V AC**) is the ideal choice for lateral or wall installations
- The **FLUSH** base, (available in **12/24V ACDC**, **30/80V ACDC** and **90/240V AC**) has been designed for flushmounted applications. It guarantees a simple and discrete installation of the device allowing a low visual impact when aesthetic is required like for example in Civil or Commercial installations
- The **DOUBLE** base, (available in **12/24V ACDC**, **30/80V ACDC** and **90/240V AC**) has been designed for lateral/wall mounting. It can mount up to two **MLINE** modules creating unique combinations between visual and acoustic devices whilst multifunctionality of each module is preserved

**MLINE**  
An "intelligent" solution  
for the most demanding applications

**SIRENA** S.p.A.

**MORE THAN  
BRIGHT IDEAS**

# ONE CONCEPT ...



All bases available in  
**allGRAY** - Light Gray RAL 7035  
**allBLACK** - Black RAL 9005  
**allRED** - Red RAL 3000  
**allWHITE** - White RAL 9003

Chart above showing **allGRAY**  
 combination examples

# MLINE

## Four product ranges to guarantee maximum adaptability for the needs of the end-users

**MLINE** modular range allows installing any of the multifunctional modules on each of the modular bases. The number of applications for **MLINE** are endless; the high quality of the products, together with the modular and multifunctional technologies allow these products to be installed in Industrial, Civil, Fire Alarm and Commercial sectors.

Sirena understands that each industry follows precise rules and requirements and has created four color lines to better allow end users and professionals to benefit from highly customizable products, to the point that each device can be considered tailor-made for each application.

**Sirena's product are engineered to fulfill end-users requirements, not vice-versa... welcome to the MLINE world...**



### allGRAY Industrial

allGRAY range has been developed to fulfill the Industrial sector requirements. Its light gray color (RAL 7035) allows to install **MLINE** products without interfering with the rest of the installation, remaining in line with the typical coloring of connection boxes, enclosures, panels, etc. allowing Professionals to deliver an added value to their job



### allBLACK Industrial

allBLACK range allows to satisfy all those requests from the Industrial sector where black color is required. This range (RAL 9005) allows preserving the aesthetic of existing installations where black color is present. allBLACK is also the ideal choice for Machine Builders looking for a device which is unique, elegant and functional, preserving the added value of their important projects



### allRED Fire Alarm

allRED range has been developed to satisfy all requirements from the Fire Alarm industry where red color is very often a fixed requirement. allRED (RAL 3000) range complements with class and elegance the existing fire alarm installations guaranteeing top functionality and the best aesthetics on the market



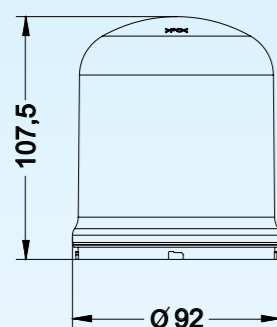
### allWHITE Civil

allWHITE range has been developed to specifically satisfy aesthetic requirements from the Civil and Commercial installations industry. These devices are extremely pragmatic, elegant and multifunctional, allowing being discretely installed increasing aesthetics while preserving all added values created by architects and design teams. Available in white (RAL 9003), this range is also indicated for Machine Builders that see their products destined to civil or commercial environments





	LT base	MT base	HT base	
V $\overline{\sim}$	12:24	30:80	-	
V $\sim$			90:240	
mA	510	330	300	110
			100	70
Flash/min. 0 / 3F: 85±10	r.p.m. 140±10		IP 65	
On $\overline{\sim}$	°C -30+50	PC	Self-extinguishing	



Multifunctional LED beacon with high optical performances. Developed with a multilevel technology, the device allows three separate lighting effects (steady, rotating, flashing) controllable via separate electric contacts.

**KEY CHARACTERISTICS**

- **Multifunction:** 3 separate functions (Steady, Rotating and Flashing) controllable independently via separate electric contacts
- **High optical performances**
  - **Steady:** a deep and rich light source ideal for attracting attention yet without disturbing
  - **Flashing:** a triple-flash strobe effect ideal for all applications where an immediate attention gain is mandatory
  - **Rotating:** a unique rotating effect which perfectly simulates the traditional rotating beacons yet without moving parts hence enormously enhancing product life time
- **Four colors available:** red, amber, green and blue
- **SMD LED technology:** longer lifetime and better resistance to vibrations
- **High IP 65 rating:** also excellent for outdoor applications

**MODULARITY**

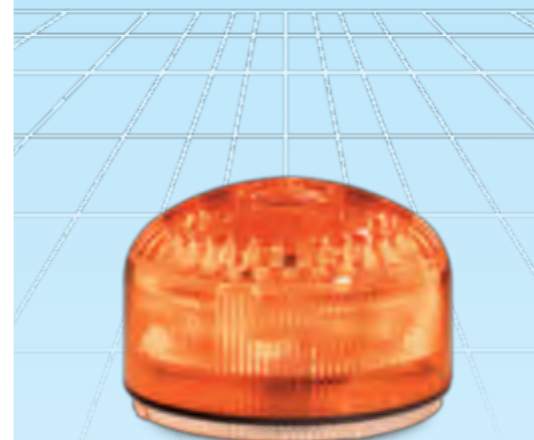
FLR S can be mounted on all **MLINE** modular bases that can be selected according to the following characteristics

- **Shape:** **SHALLOW** (ideal for flat surface mounting), **DEEP** (designed for surface mounting with pressure glands), **WALL** (designed for lateral/wall mounting), **FLUSH** (designed for flushmounted applications) and **DOUBLE** (designed for wall mounting of 2 **MLINE** devices)
- **Tension:** LT 12/24V ACDC, MT 30/80V ACDC, HT 90/240V AC
- **Color:** **allGRAY** (Industrial Light Gray RAL 7035), **allBLACK** (Industrial Black RAL 9005), **allRED** (Fire Alarm Red RAL 3000) and **allWHITE** (Civil/Commercial White RAL 9003)

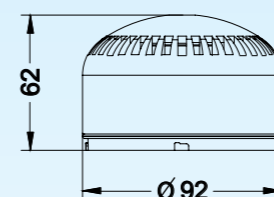
**CODES**

90351	90352	90353	90354
-------	-------	-------	-------

Data sheet : Ref. **DS.FLRS.ENG.05 12**



	LT base	MT base		HT base	
V $\overline{\sim}$	12:24	30:80		-	
V $\sim$				90:240	
mA	380	460	325	125	100
					60
dB(A)1m max 105 dB					
Flash/min. 0 / 3F: 85±10	On $\overline{\sim}$		IP 65		
32 + 32	°C -30 +50	PC	Self-extinguishing		



Multifunctional LED beacon-sounder that guarantees high optical performances as well as a high sound output. Developed with a multilevel technology, the device allows three separate levels of alarm (warning, alarm 1, alarm 2) controllable via separate electric contacts. SIR-E LED benefits from two light effects (steady, flashing) and 64 different sounds (selectable via 2 dip-switches).

**KEY CHARACTERISTICS**

- **Multifunction:** 3 separate functions (warning, alarm 1, alarm 2) controllable independently via separate electric contacts
- **High sound performances**
  - **First level of alarm:** a powerful triple-flash strobe effect that guarantees catching attention and warns operators of a potential danger or change of operating modes
  - **Second level of alarm:** a powerful triple-flash strobe effect combined with an up to 105 dB electronic sound, ideal for alerting staff of a danger or a serious change of operational circumstances (sound selectable via dip switch "A" out of 32 sounds)
  - **Third level of alarm:** a powerful steady light combined with an up to 105 dB electronic sound, ideal for alerting staff of a permanent change of operational circumstances (sound selectable via dip switch "B" out of 32 sounds)
- **Possibility of lowering the volume:** min. 65 dB circa
- **Multitone:** 64 sounds available, from fire alarm to civil tones
- **Four colors available:** red, amber, green and blue
- **SMD LED technology:** longer lifetime and better resistance to vibrations
- **High IP 65 rating:** also excellent for outdoor applications

**MODULARITY**

SIR-E LED can be mounted on all **MLINE** modular bases that can be selected according to the following characteristics

- **Shape:** **SHALLOW** (ideal for flat surface mounting), **DEEP** (designed for surface mounting with pressure glands), **WALL** (designed for lateral/wall mounting), **FLUSH** (designed for flushmounted applications) and **DOUBLE** (designed for wall mounting of 2 **MLINE** devices)
- **Tension:** LT 12/24V ACDC, MT 30/80V ACDC, HT 90/240V AC
- **Color:** **allGRAY** (Industrial Light Gray RAL 7035), **allBLACK** (Industrial Black RAL 9005), **allRED** (Fire Alarm Red RAL 3000) and **allWHITE** (Civil/Commercial White RAL 9003)

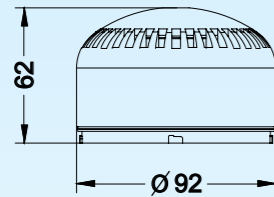
**CODES**

90361	90362	90363	90364
-------	-------	-------	-------

Data sheet: Ref. **DS.SIRELED.ENG.05 12**



	LT base	MT base		HT base		
V $\overline{\text{---}}$	12:24	30:80		-		
V $\sim$				90:240		
mA	240	280	150	70	60	35
dB(A)1m max 105 dB						
°C	-30 + 50		On $\times$ $\times$		IP 65	
	32 + 32		PC		Self-extinguishing	



Multifunctional electronic sounder that guarantees a high sound output. Developed with a multilevel technology, the device allows two separate levels of alarm (warning, alarm) controllable via separate electric contact. SIR-E benefits from 64 different sounds (selectable via 2 dip-switches).

#### KEY CHARACTERISTICS

- **Multifunction:** 2 separate functions (warning, alarm) controllable independently via separate electric contacts
- **High sound performances**
  - **First level of alarm:** a powerful up to 105 dB electronic sound, ideal for alerting staff of a danger or a serious change of operational circumstances (sound selectable via dip switch "A" out of 32 sounds)
  - **Second level of alarm:** a powerful up to 105 dB electronic sound, ideal for alerting staff of a permanent change of operational circumstances (sound selectable via dip switch "B" out of 32 sounds)
- **Possibility of lowering the volume:** min. 65 dB circa
- **Multitone:** 64 sounds available, from fire alarm to civil tones
- **Four color available:** gray, white, red and black
- **High IP 65 rating:** also excellent for outdoor applications

#### MODULARITY

SIR-E can be mounted on all MLINE modular bases that can be selected according to the following characteristics

- **Shape:** **SHALLOW** (ideal for flat surface mounting), **DEEP** (designed for surface mounting with pressure glands), **WALL** (designed for lateral/wall mounting), **FLUSH** (designed for flushmounted applications) and **DOUBLE** (designed for wall mounting of 2 MLINE devices)
- **Tension:** LT 12/24V ACDC, MT 30/80V ACDC, HT 90/240V AC
- **Color:** **allGRAY** (Industrial Light Gray RAL 7035), **allBLACK** (Industrial Black RAL 9005), **allRED** (Fire Alarm Red RAL 3000) and **allWHITE** (Civil/Commercial White RAL 9003)

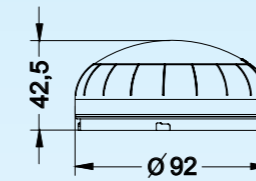
#### CODES

90360 90359 90358 90357

Data sheet: Ref. DS.SIRE.ENG.0512



	LT base	MT base		HT base		
V $\overline{\text{---}}$	12:24	30:80		-		
V $\sim$				90:240		
mA	300	270	240	100	80	50
Flash/min. 0 / 1F: 150±10 / 5F: 72±10 IP 65						
On $\times$ $\times$	°C-30+50		PC		Self-extinguishing	



Flat LED multifunctional signaling device engineered to satisfy the most demanding applications. Developed on the bases of a modular technology, XLF S allows three different light effects (steady, blinking, strobe effect) controllable by separate electric contacts making this device the perfect choice for most applications.

XLF S utilizes a special combination of high-quality polymers with an opaline component which allows maximizing the optical output with an intense but diffused light output. Long-distance visibility is guaranteed by the centrally located intensity point allowing focusing on the device.

#### KEY FEATURES

- **Multifunctional:** 3 levels of alarm (steady, blinking, strobe effect) controllable independently via separate electric contacts
- **High optical performances**
  - **Steady light:** an intense and rich light output that allows gaining public attention yet without being disturbing
  - **Blinking light:** a constant blink ideal for signaling a change of operating conditions
  - **Strobe effect:** 5x flash (strobe effect) ideal for all applications where gaining public attention is a must
- **Four color available:** red, amber, green and blue
- **SMD LED technology:** higher resistance to vibrations allows to further increase product life
- **High IP 65 rating:** also excellent for outdoor applications

#### MODULARITY

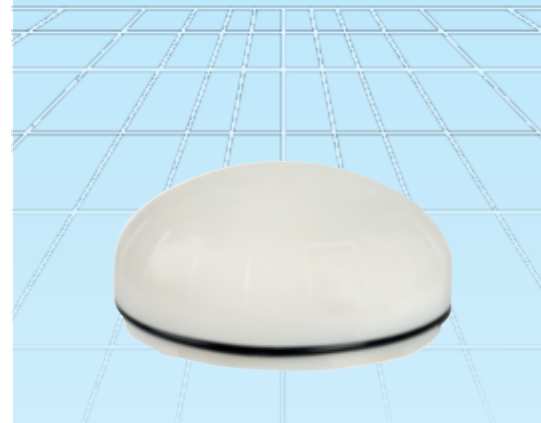
XLF S can be mounted on all MLINE modular bases that can be selected according to the following characteristics

- **Shape:** **SHALLOW** (ideal for flat surface mounting), **DEEP** (designed for surface mounting with pressure glands), **WALL** (designed for lateral/wall mounting), **FLUSH** (designed for flushmounted applications) and **DOUBLE** (designed for wall mounting of 2 MLINE devices)
- **Tension:** LT 12/24V ACDC, MT 30/80V ACDC, HT 90/240V AC
- **Color:** **allGRAY** (Industrial Light Gray RAL 7035), **allBLACK** (Industrial Black RAL 9005), **allRED** (Fire Alarm Red RAL 3000) and **allWHITE** (Civil/Commercial White RAL 9003)

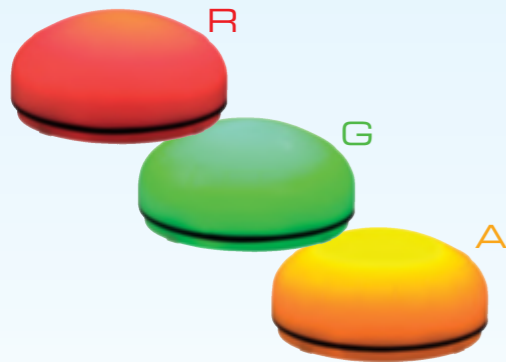
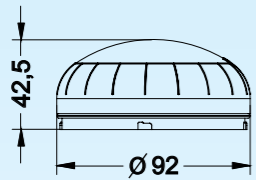
#### CODES

90501 90502 90503 90504

Data sheet: Ref. DS.XLFS.ENG.0512



	LT base	MT base	HT base
V $\overline{\text{---}}$	12:24	30:80	90:240
V $\sim$			
mA	370 310	250 100	90 55
Flash/min. 0 / 1F:	150±10		IP 65
On $\overline{\text{---}}$	°C -30+50	PC	Self-extinguishing



Flat LED multicolor signaling device engineered to satisfy the most demanding applications. Developed on the bases of a modular technology, XLF RGA allows three different colors (red, green, amber) controllable by separate electric contacts making this device the perfect choice for most applications.

XLF RGA utilizes a special combination of high-quality polymers with an opaline component which allows maximizing the optical output with an intense but diffused light output.

#### KEY FEATURES

- **Multicolor:** 3 levels of alarm (red, amber, green) selectable independently via separate electric contacts
- **Multifunction:** 2 separate functions (Steady and Flashing) controllable via dip-switch independently for each channel
- **High optical performances**
  - **Green:** the standard in signaling to indicate "all clear" or "normal operating conditions"
  - **Amber:** the standard for indicating a change of operating conditions or warning of a potential danger
  - **Red:** the standard for indicating a stop of the operating conditions or a real danger
- **SMD LED technology:** higher resistance to vibrations allows to further increase product life
- **High IP 65 rating:** also excellent for outdoor applications

#### MODULARITY

XLF RGA can be mounted on all MLINE modular bases that can be selected according to the following characteristics

- **Shape:** **SHALLOW** (ideal for flat surface mounting), **DEEP** (designed for surface mounting with pressure glands), **WALL** (designed for lateral/wall mounting), **FLUSH** (designed for flushmounted applications) and **DOUBLE** (designed for wall mounting of 2 MLINE devices)
- **Tension:** LT 12/24V ACDC, MT 30/80V ACDC, HT 90/240V AC
- **Color:** **allGRAY** (Industrial Light Gray RAL 7035), **allBLACK** (Industrial Black RAL 9005), **allRED** (Fire Alarm Red RAL 3000) and **allWHITE** (Civil/Commercial White RAL 9003)

#### CODES



Data sheet: Ref. **DS.XLFRGA.ENG.0512**

#### SIR-E FA



	LT base	
V $\overline{\text{---}}$	12:24	
mA	45	35
	dB(A)1m max 100 dB	
°C -30 + 50	On $\overline{\text{---}}$	IP 65
12 + 1	PC	Self-extinguishing

#### CODES

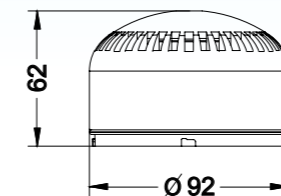


Data sheet: Ref. **DS.SIREFA.ENG.0512**

#### SIR-E LED FA



	LT base	
V $\overline{\text{---}}$	12:24	
mA	120	110
	dB(A)1m max 100 dB	
Flash/min. 0 / 3F:	85±10	IP 65
On $\overline{\text{---}}$	°C -30 + 50	PC
12 + 1	Self-extinguishing	



#### CODES



Data sheet: Ref. **DS.SIRELEDFA.ENG.0512**

EN54-3 approved multifunctional electronic sirens with excellent acoustic performances. Developed on the bases of a modular technology, the FA range allows two levels of alarm powered by 13 EN54-3 approved tones. SIR-E FA allows 12 pre-alarm tones available on the 1st level (selectable via a dip-switch) and 1 alarm steady tone (PFER TOXIC GAS) on the 2nd level. SIR-E LED FA, beside the same characteristics of the SIR-E FA, includes a luminous LED beacon.

#### KEY FEATURES

- **Multifunction:** 2 levels of alarm (pre-alarm, alarm)
- **High acoustic performances**
  - **Pre-alarm:** a powerful electronic tone of up to 105 dB ideal for signaling an imminent danger of a change to the standard conditions (12 EN54-3 approved tones selectable via dip-switch)
  - **Alarm:** a powerful electronic tone of up to 105 dB ideal for signaling a permanent danger or change to the standard conditions (1 EN54-3 approved tone: PFER TOXIC GAS)
- **Multitone:** 13 EN54-3 approved tones
- **High IP 65 rating:** also excellent for outdoor applications

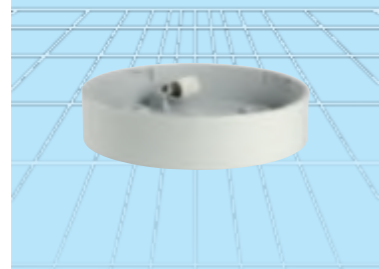
#### MODULARITY

SIR-E FA and SIR-E LED FA can be mounted on all MLINE modular bases that can be selected according to the following characteristics

- **Shape:** **SHALLOW** (ideal for flat surface mounting), **DEEP** (designed for surface mounting with pressure glands), **WALL** (designed for lateral/wall mounting), **FLUSH** (designed for flushmounted applications) and **DOUBLE** (designed for wall mounting of 2 MLINE devices)
- **Tension:** LT 12/24V DC
- **Color:** **allRED** (Fire Alarm Red RAL 3000) and **allWHITE** (Civil/Commercial White RAL 9003)

APPROVAL NUMBER  
**0068-CPD-0026**

## SHALLOW



LT 12/24V ACDC

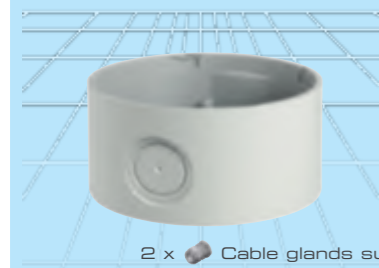
Base designed for surface mounting where cabling occurs from the bottom of the device and where a compact designed is required

### CODES

LT SHALLOW 12/24V ACDC 90367 90344 90343 90451



## DEEP



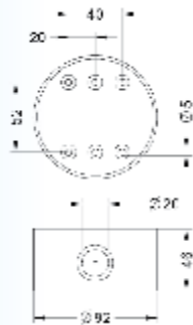
LT 12/24V ACDC  
MT 30/80V ACDC  
HT 90/240V AC

2 x Cable glands supplied

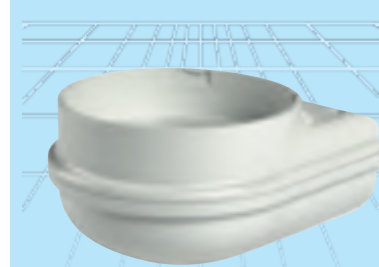
Base designed for surface mounting in conjunction with the use of pressure glands. This base allows up to two M20 pressure glands making this solution ideal for series mounting

### CODES

LT DEEP 12/24V ACDC 90368 90346 90345 90452  
MT DEEP 30/80V ACDC 90432 90437 90442 90455  
HT DEEP 90/240V AC 90369 90509 90508 90458



## WALL



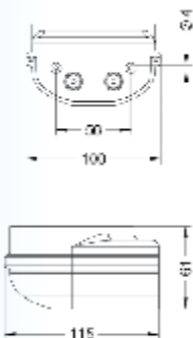
LT 12/24V ACDC  
MT 30/80V ACDC  
HT 90/240V AC

2 x Cable gland ready

Base designed for lateral/wall mounting. Allows installing up to two M20 pressure glands making this product suitable also when it's not possible to wire the base of the signaling device

### CODES

LT WALL 12/24V ACDC 90370 90348 90347 90453  
MT WALL 30/80V ACDC 90433 90438 90443 90456  
HT WALL 90/240V AC 90371 90511 90510 90459



## DOUBLE



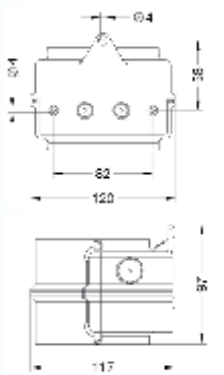
2 x Cable gland ready

LT 12/24V ACDC  
MT 30/80V ACDC  
HT 90/240V AC

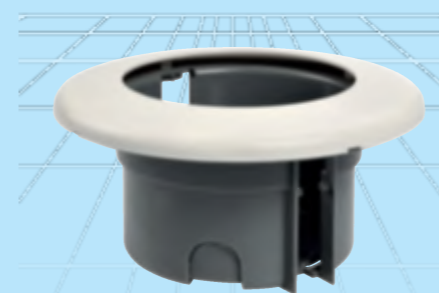
Base designed for lateral/wall mounting, it can mount up to two **MLINE** modules creating unique combinations between visual and acoustic devices whilst the multifunctionality of each module is guaranteed

### CODES

LT DOUBLE 12/24V ACDC 90372 90374 90373 90454  
MT DOUBLE 30/80V ACDC 90435 90440 90445 90457  
HT DOUBLE 90/240V AC 90512 90514 90513 90460



## FLUSH

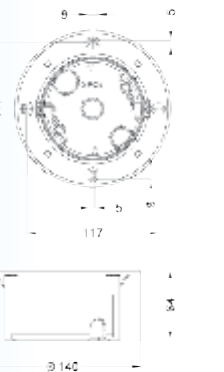


LT 12/24V ACDC  
MT 30/80V ACDC  
HT 90/240V AC

Base designed for flushmounted applications. It guarantees a simple and discrete installation of the device allowing a low visual impact when aesthetic is required like for example in Civil or Commercial installations

### CODES

LT FLUSH 12/24V ACDC 90375 90349  
MT FLUSH 30/80V ACDC 90439 90444  
HT FLUSH 90/240V AC 90376 90446



**MLINE** One concept | Endless solutions



Distributed by

**100% Made in Italy**

Designed, Engineered and Manufactured in Rosta, Italy

 **SIRENA** s.p.a.

Corso Moncalisio 5-10-12-14-16  
10090 ROSTA (Torino) Italia  
Tel: 011.95.68.555 - Int. +39.011.95.68.555  
Fax 011.95.67.928 - 011.95.68.595  
Fax Export +39.011.95.68.597  
E-mail: [sirena.spa@sirena.it](mailto:sirena.spa@sirena.it) - [www.sirena.it](http://www.sirena.it)  
R.E.A. 487901 - MECC. TO 027549  
Registro Imprese TO - C.F. 01047730013  
Partita IVA comunitaria: IT 01047730013  
Capitale sociale € 5.000.000 di cui versato €5.000.000  
Printed in Italy - 05/2012  
Ref. 3000



I dati esposti in questo catalogo non sono impegnativi.  
La SIRENA S.p.A. si riserva il diritto senza pubblico avviso di  
apportare in qualsiasi momento tutte le varianti ritenute opportune